

Helping to Make the Connections



"There has never been a more critical time for people to understand the Earth, its landscapes and our role in it. The RSGS is helping to make the connections between people, places and the planet."

Professor Iain Stewart

We understand that, in your Will, you will wish to prioritise the interests of your family and friends. However, we hope you might also consider including a legacy for the Royal Scottish Geographical Society.

To include the RSGS in your Will:

- **decide which Fund** you wish to support (General, Talks, Education, Collections or Grants);
- **decide which type of legacy** you wish to leave (pecuniary, specific or residuary);
- **contact your solicitor** or other legal advisor;
- **pass on our full details** (The Royal Scottish Geographical Society, 15-19 North Port, Perth, PH1 5LU, Scottish Charity No SC015599).

Please help us to inspire generations to come.

Making a Real Difference

Legacies remain one of the most important ways of supporting the Royal Scottish Geographical Society's work. Indeed, many of our achievements over the past century and more have only been possible because of money received from RSGS supporters in their Wills, or in memory of loved ones.

The Livingstone Medal, for instance, was endowed in 1901 by Dr David Livingstone's family in his honour. And legacy gifts from members have often kept the Society going through lean times, allowing it to continue, to develop and to grow.

More recently, the RSGS has received several bequests of valuable maps, books and images, sometimes with the money required to manage them; for example, an extensive collection of beautiful old maps, and a residuary legacy which allowed us to conserve the gifted maps and helped make possible the move to Perth.

We can all make a positive difference, large or small, in the world we leave behind. You can help us continue to inspire generations to come.

Please consider helping the RSGS into the future by writing a bequest into your Will.

The Royal Scottish Geographical Society,
15-19 North Port, Perth, PH1 5LU
t: 01738 455050 e: enquiries@rsgs.org w: www.rsgs.org

Scottish Charity No SC015599

natural ecosystems
 communities & neighbourhoods
 economics & inequality
 earthquakes & volcanoes
 health & well-being
 culture & heritage
 bus & train services
 ...how we make sense of the world.
 oceans & ocean currents
 energy & resources
 national boundaries
 conflict & peace
 identity & security
 biodiversity
 mountains & river systems
 drought & flooding
 urban planning
 weather patterns
 property ownership
 sustainability
 rocks & minerals
 waste & pollution
 maps & place names
 localisation & globalisation
 countryside & natural features
 climate change
 wealth & poverty
 continents & countries
 GPS & SatNav
 landscape restoration



Royal Scottish Geographical Society

Continuing Geography

Leaving a Legacy for the RSGS

Exploring Geography

Inspiring People

Developing Citizenship

Conserving Heritage

Promoting Science

"Don't judge each day by the harvest you reap but by the seeds that you plant."

Robert Louis Stevenson



Royal Scottish Geographical Society

Sharing an Interest in the World

Leaving a legacy for the RSGS is like leaving a gift for all our members, current and future – we could not afford to operate without legacy donations.

By including a legacy for the RSGS in your Will, you can help ensure the Society's future, and the amount of any charitable gift will be deducted from the value of your estate on which Inheritance Tax is calculated.

There are three main types of legacy:

- **pecuniary legacy** – a gift of a fixed sum of money, which you may wish to index-link;
- **specific legacy** – a gift of a particular item or items of value, such as property or shares;
- **residuary legacy** – a share of the remainder of your estate after all other legacies and debts have been paid.

You can leave a legacy to support the general work of the RSGS or, if you prefer, you can contribute directly to specific aspects of our work – talks, education, collections or grants.

If you are able to support us, and would like to let us know of your pledge, or you would like to speak to someone about leaving a legacy, please contact us on 01738 455050.

Mike Robinson
Chief Executive

Preserving the Past & Promoting the Future

1 General Fund - Exploring Geography

We always welcome general legacies towards the wider work of the Society. If you choose to leave a legacy to the RSGS, it is most helpful if that gift is 'unrestricted', so that the Society can prioritise spend according to current need.

2 Specific Funds - Targeting Donations

Alternatively, if you prefer to target your donation towards a particular area of work, we are establishing four special funds for donations, grants and legacies, which will allow us to grow and develop key aspects of our work for the next 125 years and more. Individuals and organisations can contribute towards these funds at any time.

2a Talks Fund - Inspiring People

For generations, RSGS members have enjoyed learning direct from many of the most inspiring people of their age. The **Talks Fund** will support the costs of running the RSGS's illustrated talks, including speakers' fees and travel expenses, venue hire, medal and awards, publicity and promotion, so that members can continue to enjoy hearing about people, places and the planet, from those who are active and experienced in their field.



2b Education Fund - Developing Citizenship

The RSGS is working to promote geographical teaching and learning for young people. The **Education Fund** will support the costs of developing and running the RSGS's projects in schools, such as the playground map project, and of promoting geography in schools and within the curriculum, to inspire the next generation of geographers.



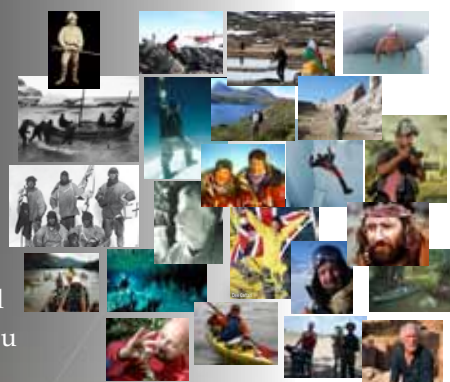
2c Collections Fund - Conserving Heritage

The RSGS has a unique and fascinating collection of historical and contemporary maps, books, images, papers and artefacts. The **Collections Fund** will support the costs of conserving and making accessible items in the collection, including cataloguing, restoring, maintaining, digitally scanning and exhibiting them, so that they can be understood and appreciated by as many people as possible.



2d Grants Fund - Promoting Science

From 1884 till the present day, the RSGS and its members have part-funded the research and expeditions carried out by hundreds of students and explorers. The **Grants Fund** will support the costs of awarding RSGS grants, allowing us to fund more geographical research work and expeditions.



Please help us to *inspire* generations to come

The Royal Scottish Geographical Society Scottish Charity No SC015599

